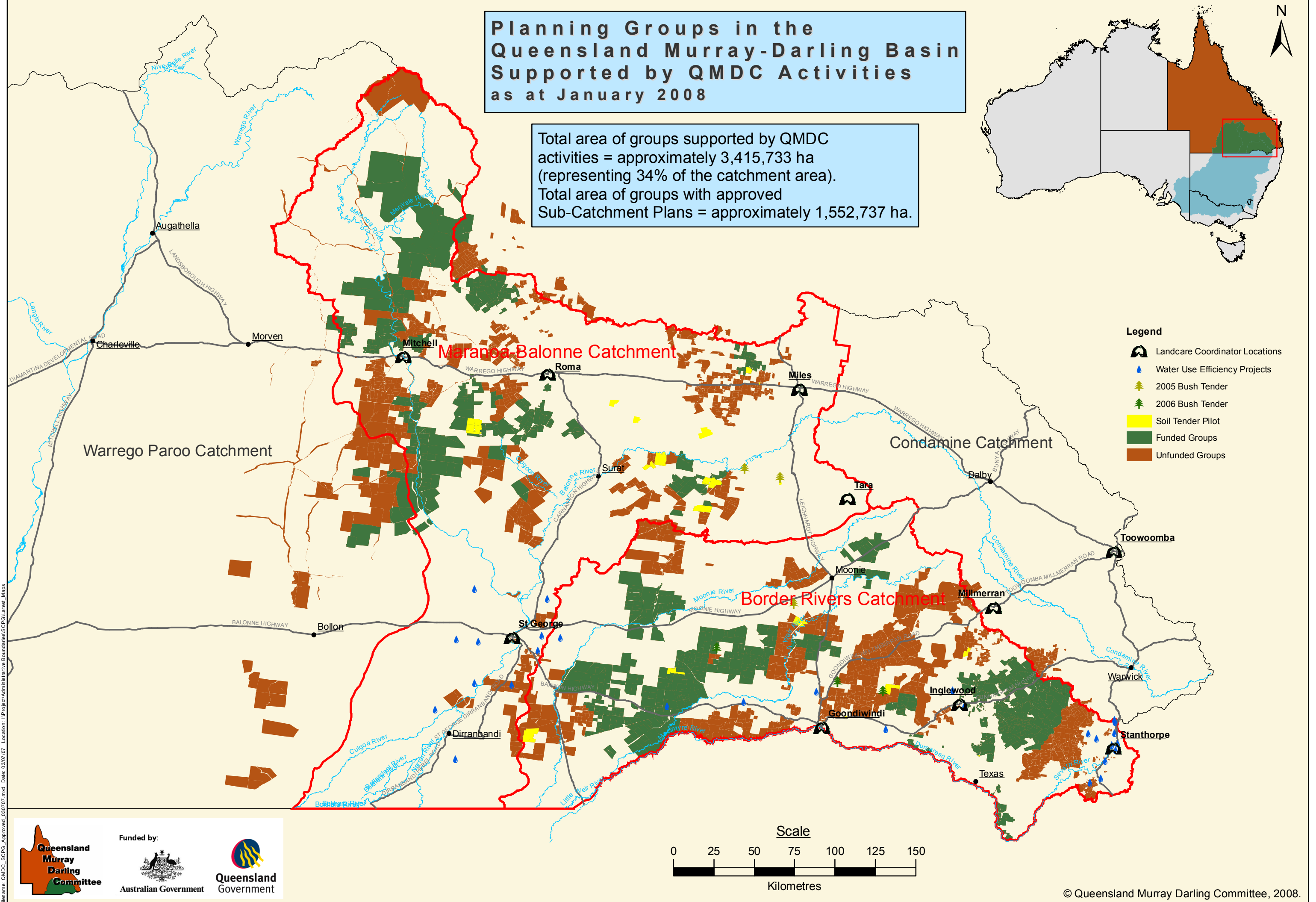
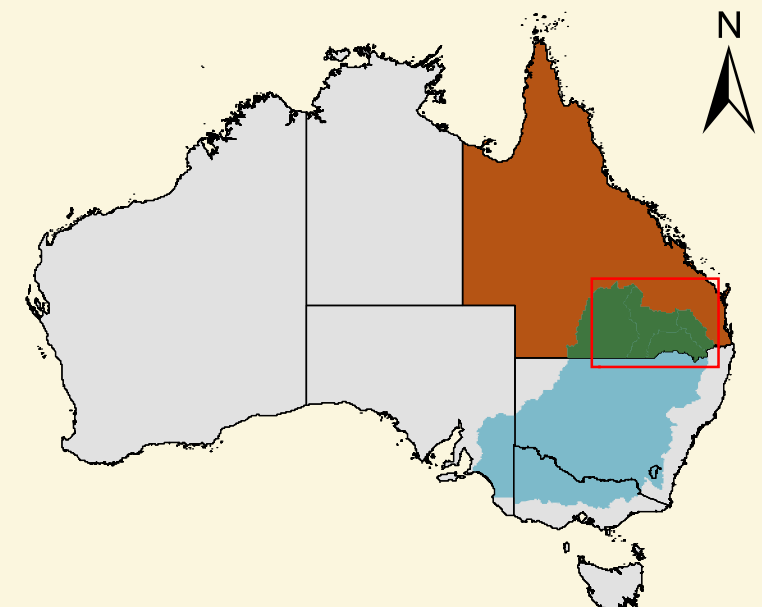
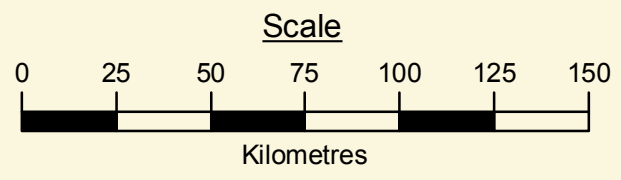


# Planning Groups in the Queensland Murray-Darling Basin Supported by QMDC Activities as at January 2008

Total area of groups supported by QMDC activities = approximately 3,415,733 ha (representing 34% of the catchment area).  
 Total area of groups with approved Sub-Catchment Plans = approximately 1,552,737 ha.



- Legend**
- Landcare Coordinator Locations
  - Water Use Efficiency Projects
  - 2005 Bush Tender
  - 2006 Bush Tender
  - Soil Tender Pilot
  - Funded Groups
  - Unfunded Groups



Funded by:

Filename: QMDC\_SCFG\_Approved\_030707.mxd Date: 03/07/07 Location: I:\Project\Administrative\Boundaries\SCFG\Latent\_Maps