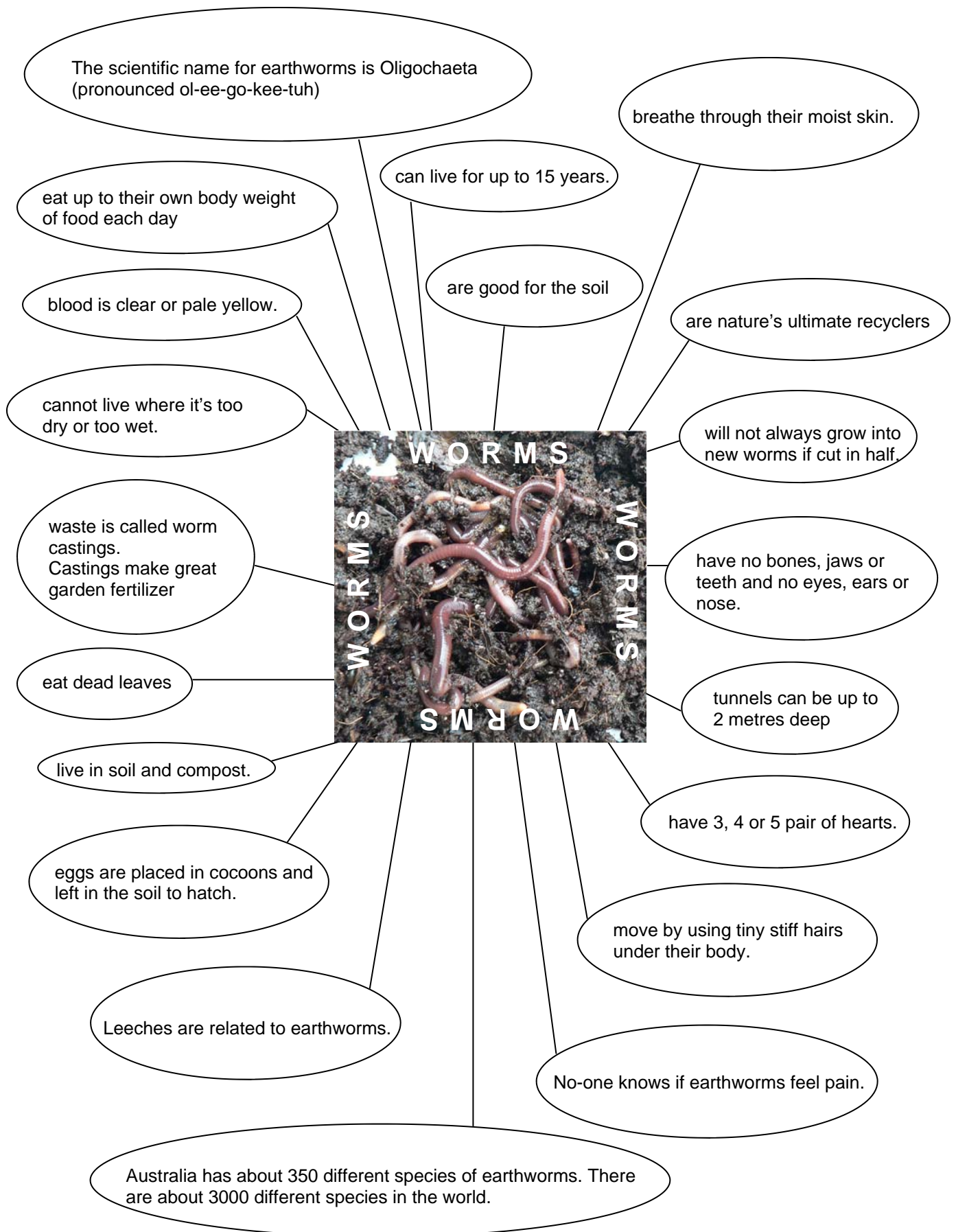


Worms



Worm Facts



Parts of a Worm

anus: the worm's bottom.

clitellum: also called the saddle. It's the thick segment on a worm where eggs are formed and kept before they are laid. It's located about one third down the length of its body.

crop: the special pouch inside its body in which food is kept.

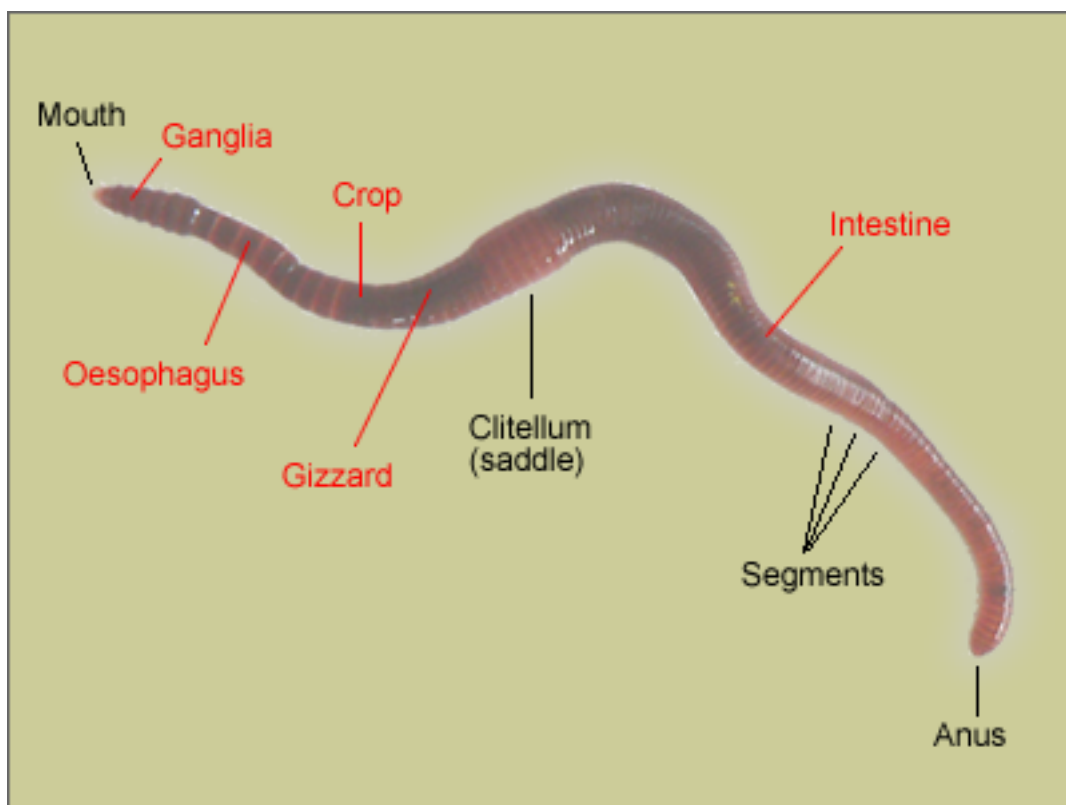
ganglia: nerve endings just behind a worm's forehead. There are two of them.

gizzard: a worm's stomach-like organ where food is ground up for digestion.

intestine: the tube inside connecting the gizzard and the anus. Digested food passes through the intestine to be absorbed into the body.

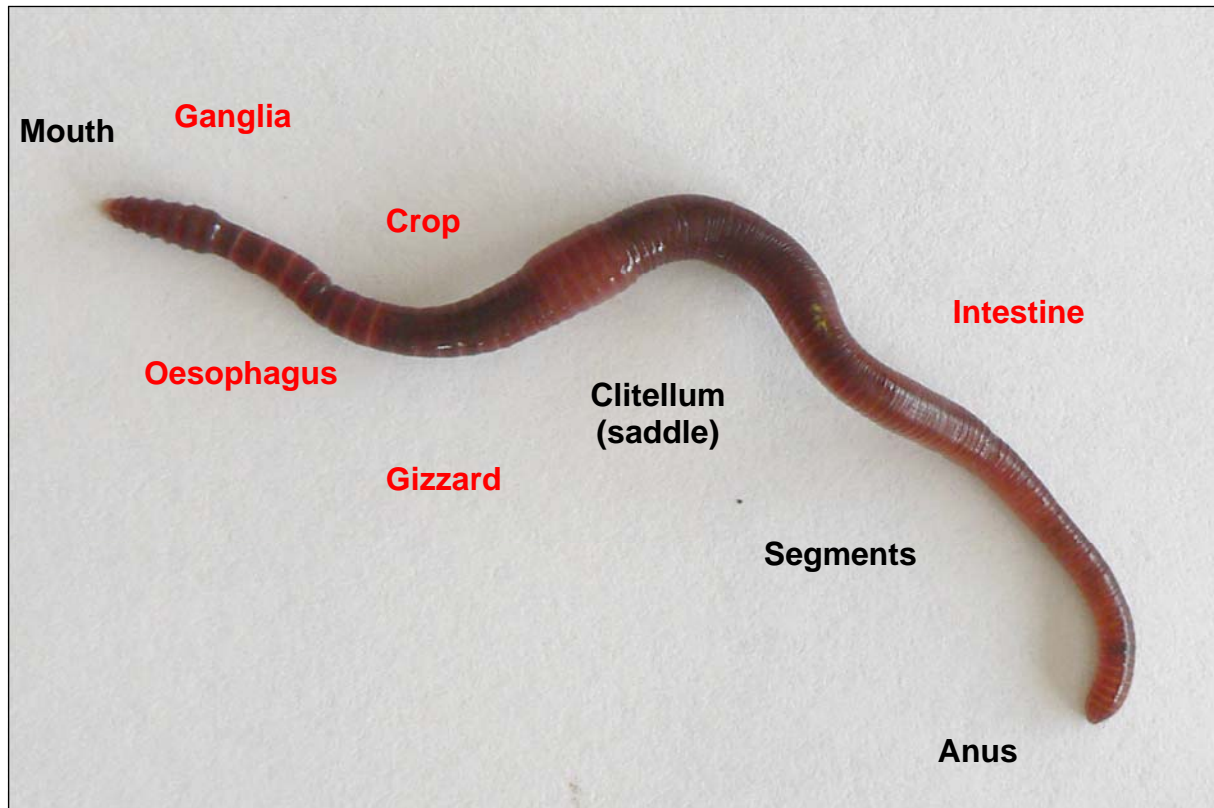
oesophagus: the tube which connects the worms mouth and stomach.

segment: one of the rings that make up the body.



Match the Parts

Draw a line from the name to the correct body part.



Match the Words

Draw a line from the name of the body part to the description.

Anus :

Also called the saddle. It's the thick segment on a worm where eggs are formed and kept before they are laid. It's located about one third down the length of its body.

Clitellum :

The special pouch inside its body in which food is kept.

Crop :

The worm's bottom.

Ganglia :

A worm's stomach-like organ where food is ground up for digestion.

Gizzard :

Nerve endings just behind a worm's forehead. There are two of them.

Intestine :

The tube inside connecting the gizzard and the anus. Digested food passes through the intestine to be absorbed into the body.

Oesophagus :

One of the rings that make up the body.

Segment :

The tube which connects the worm's mouth and stomach.

Label the Diagram



Cut out words and glue them on the picture to label the parts of the worm.

Saddle

Mouth

Segments

Anus

Worm Puzzle

Cut out the picture to make a puzzle.

