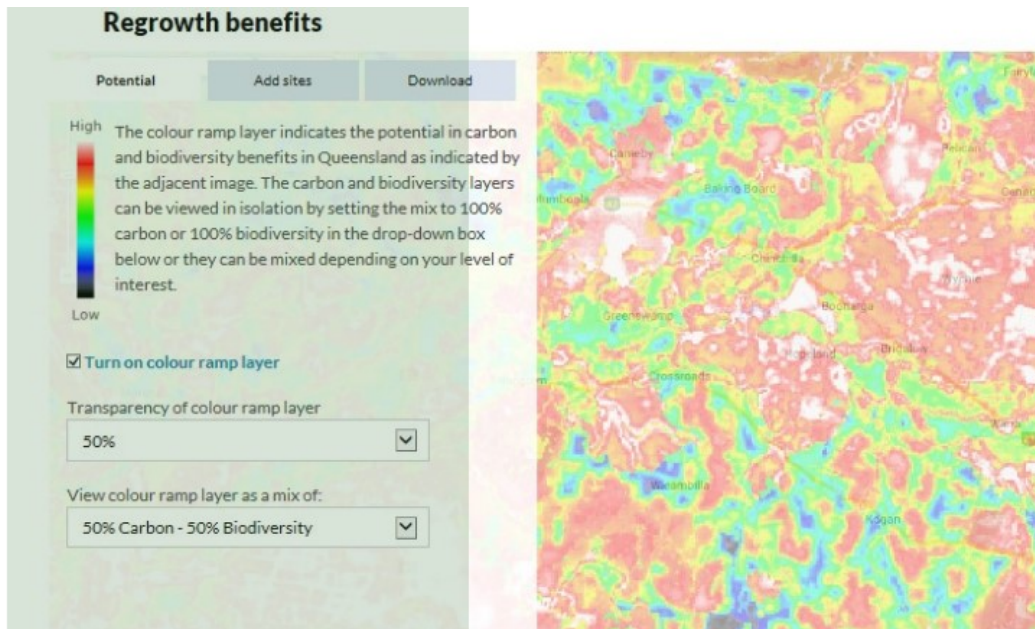


# LEARN ALL YOU EVER WANTED TO KNOW ABOUT MAPS AND APPS @ DIRRANBANDI

Tuesday, 17<sup>th</sup> November 2015  
Dirranbandi, 8:30 AM to 2:00 PM

RSVP to: Regional Landcare Facilitator Jean Prow, M: 0427 580 399 or E: [jeanp@qmdc.org.au](mailto:jeanp@qmdc.org.au)



**Regrowth benefits**

Potential Add sites Download

High The colour ramp layer indicates the potential in carbon and biodiversity benefits in Queensland as indicated by the adjacent image. The carbon and biodiversity layers can be viewed in isolation by setting the mix to 100% carbon or 100% biodiversity in the drop-down box below or they can be mixed depending on your level of interest.

Low

Turn on colour ramp layer

Transparency of colour ramp layer  
50%

View colour ramp layer as a mix of:  
50% Carbon - 50% Biodiversity

An interactive map to find information about particular places (sites) and their suitability for regrowing native forest including:

- biodiversity benefits
- site specific data
- indicative carbon storage
- carbon storage rates for forest regrowth

<http://environment.ehp.qld.gov.au/regrowth-benefits/>

regrowth benefits map

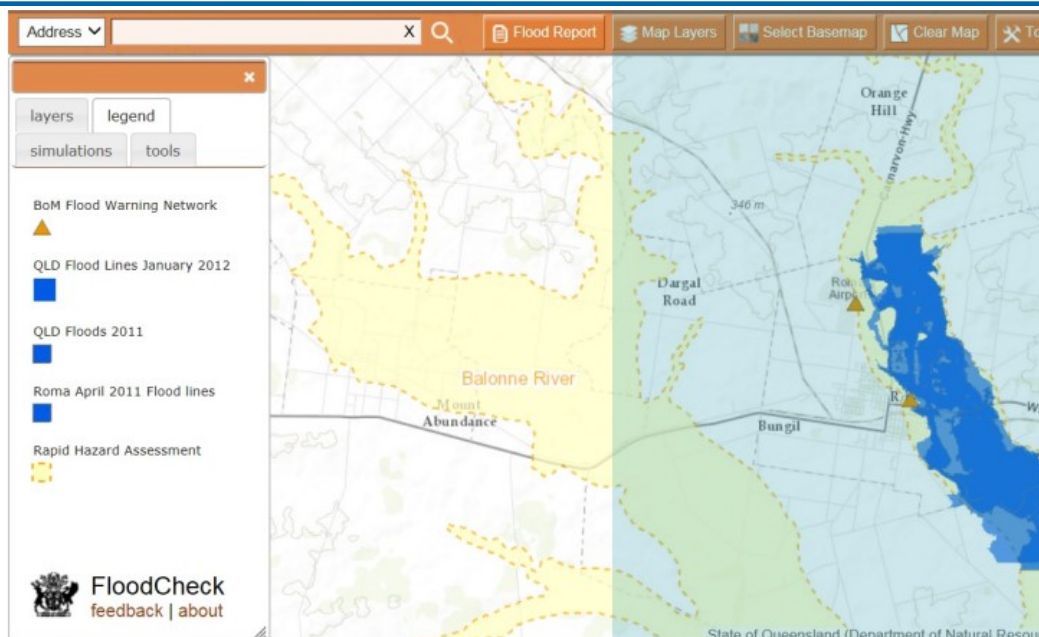


*The Regional Landcare Facilitator Program is an initiative of the Australian Government Department of Agriculture. This project is supported by QMDC, through funding from the Australian Government's National Landcare Programme.*

# LEARN ALL YOU EVER WANTED TO KNOW ABOUT MAPS AND APPS @ DIRRANBANDI

Tuesday, 17<sup>th</sup> November 2015  
Dirranbandi, 8:30 AM to 2:00 PM

RSVP to: Regional Landcare Facilitator Jean Prow, M: 0427 580 399 or E: [jeanp@qmdc.org.au](mailto:jeanp@qmdc.org.au)



## floodcheck

Interactive site includes:

- flood simulations
- Flood information report for individual Lots, with links to relevant commissioned reports.
- historic imagery and flood lines

<http://flood.dnrm.esriaustraliaonline.com.au/floodcheck/>

Check river heights and rainfall data at [http://www.bom.gov.au/qld/flood/rain\\_river.shtml](http://www.bom.gov.au/qld/flood/rain_river.shtml)

QUEENSLAND  
MURRAY-DARLING  
COMMITTEE



Australian Government

National  
Landcare  
Programme



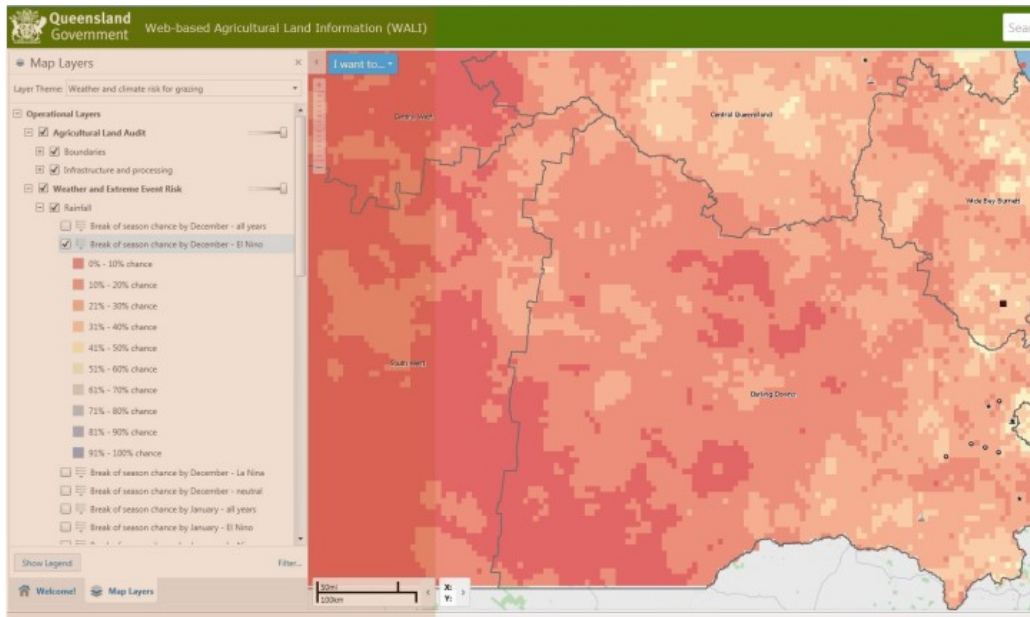
Regional  
Landcare  
Facilitator

*The Regional Landcare Facilitator Program is an initiative of the Australian Government Department of Agriculture. This project is supported by QMDC, through funding from the Australian Government's National Landcare Programme.*

# LEARN ALL YOU EVER WANTED TO KNOW ABOUT MAPS AND APPS @ DIRRANBANDI

Tuesday, 17<sup>th</sup> November 2015  
Dirranbandi, 8:30 AM to 2:00 PM

RSVP to: Regional Landcare Facilitator Jean Prow, M: 0427 580 399 or E: [jeanp@qmdc.org.au](mailto:jeanp@qmdc.org.au)



Online mapping tool to create simple maps from the Queensland Department of Agriculture and Fisheries.  
<https://www.daf.qld.gov.au/environment/ag-land-audit/web-mapping-tool>

Themes include:

- Weather and climate risk
- Intensive animal production
- Broadacre cropping
- Horticulture & forestry
- Infrastructure
- Mining tenure
- Planning interests
- Water planning

WALI  
ag land info

QUEENSLAND  
MURRAY-DARLING  
COMMITTEE



Australian Government

National  
Landcare  
Programme



Regional  
Landcare  
Facilitator

*The Regional Landcare Facilitator Program is an initiative of the Australian Government Department of Agriculture. This project is supported by QMDC, through funding from the Australian Government's National Landcare Programme.*